



**Bonifacio Global City Branch**

21st Floor, ORE Central Building  
9th Avenue corner 31st Street  
Bonifacio Global City, Taguig City

A premier LASIK surgery provider, Shinagawa Lasik & Aesthetics Center, with its more than 30 years of experience, has risen through the ranks to become one of the world-renowned leader in cataract and LASIK surgeries.

Regarded as one the top LASIK surgery centers, with countless successful procedure, Shinagawa Lasik and Aesthetics Center ensures the safety and quality of its services at a very reasonable price.

**MAKE AN APPOINTMENT**

Contact us through our Patient Care Lines:

(+632) 7-368-5238 - LANDLINE  
(+63) 921-217-0517 – SMART  
(+63) 917-862-7454 – GLOBE

Mondays to Sundays, 10AM to 7PM  
Including Holidays

[www.shinagawa.ph](http://www.shinagawa.ph)

**BlephEx™**  
Healthy Lids for Life!



 **SHINAGAWA**  
Lasik & Aesthetics



## BlephEx® (Eyelid Microblepharoexfoliation)

BlephEx®, also known as Eyelid Microblepharoexfoliation, is a revolutionary treatment for Blepharitis and Dry Eye performed by Shinagawa's certified Lid Hygienists. BlephEx thoroughly cleans your eyelids gently by using a medical grade micro-sponge. This micro-sponge spins at the edges of your eyelids and eyelashes to remove the crusting and oil deposits that cause inflammation and eye discomfort.

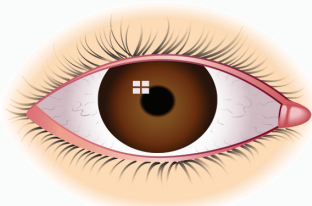


*Dry Eye Blepharitis Syndrome (DEBS)*

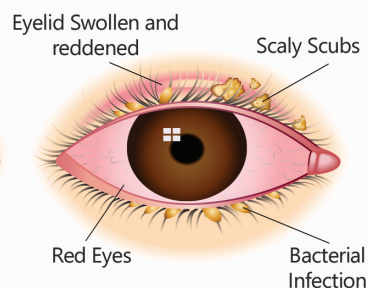
## What is Blepharitis?

Blepharitis is a common eyelid inflammation that can occur at any age. Blepharitis typically occurs when tiny oil glands located at the base of the eyelashes become clogged with debris and oil leading to swollen, irritated and red eyes. Several diseases and conditions can cause blepharitis, such as dry eyes. Blepharitis does not result in permanent vision damage and is not contagious.

### Healthy Eyes



### Blepharitis



## What Are the Symptoms of Blepharitis?

Typical symptoms include:

- Itchy, sore and red eyelids that stick together
- Crusty or greasy eyelashes
- A burning, gritty sensation in your eyes
- Increased sensitivity to light (photophobia)
- Swollen eyelid margins
- Wearing contact lenses become unbearable
- Abnormal eyelash growth or loss of eyelashes in severe cases



## Who can have BlephEx®?

- Eye surgery candidates
- Dry eye sufferers
- Patients diagnosed with Blepharitis
- Contact lens wearers
- Heavy makeup users
- Patients who experience constant eye discomfort
- Intense computer, TV, smart phones and tablet users

## FREQUENTLY ASKED QUESTIONS:

### How Does BlephEx® Work?

BlephEx is a painless procedure performed by our certified lid hygienists. A revolutionary hand piece is used to precisely and carefully spin a medical grade micro-sponge along the edge of your eyelids and eye lashes to remove crusts and debris and exfoliating your eyelids.

### How long is the BlephEx® procedure and is it painful?

The procedure lasts around 10 minutes on average and is completely painless. Patients may feel a tickling sensation. An aesthetic drop is usually placed in each eye prior to treatment for increased comfort.

### What Happens after the BlephEx® Procedure?

After the procedure, the patient is instructed on how to maintain their clean eyelids with regular eyelid hygiene. The procedure is repeated at 2-3 month intervals or as prescribed by the doctor.

### I wear contact lenses. Should I have a BlephEx® procedure on my eyelids?

Yes! Contact lens wearers are 10 times more likely to develop Dry eye and will get inflammatory damage to their tear glands much earlier in life. Having regular BlephEx® treatments performed every 3 months will keep your eyelids healthy.

### Will BlephEx® procedure interfere with my eye drops/ medicines?

No, it is recommended that you continue all of your other drops or medicines prescribed by your doctor.

### Can I perform BlephEx® at home?

No, due to the close proximity to the eye, BlephEx® is only to be performed by a professional eye care specialist or certified eyelid hygienist in our facility.